

**GEKKO®**  
FLOORING ADHESIVES

# G67

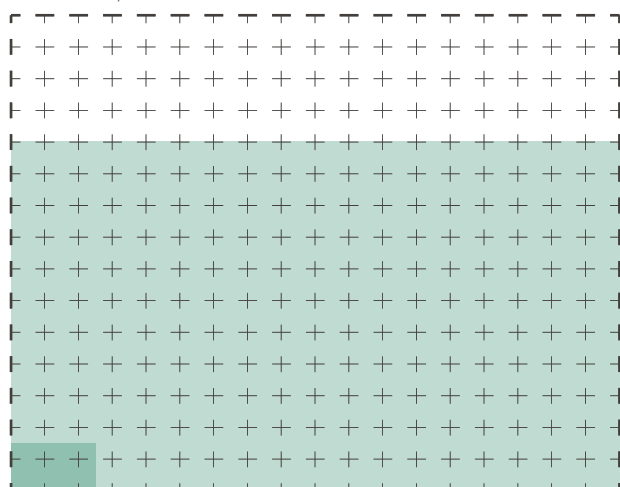
## WATER-BASED TACKIFIER ADHESIVE

- Provides a permanently tacky film of adhesive
- Prevents carpet tiles from moving when in place but still allows the tiles to be lifted up if required
- Non-flammable propellant
- Can be used in occupied areas



## TECHNICAL DATA

Scale: 1 square = 4m<sup>2</sup>



SQUARE METRE COVERAGE (m<sup>2</sup>)\*:

	■ 22ltr	■ 500ml
Single-sided	800m <sup>2</sup>	15m <sup>2</sup>
Double-sided	n/a	n/a

APPLICATION TYPE:

**Single-sided**

FLASH-OFF TIME\*\*:

**3 - 4 mins**

OPEN TIME\*\*:

**n/a**

COLOUR:



**Clear/White**

GUN TYPE:



**Wand Gun**

HOSE TYPE:



**Rubber**

TIP:



**9501**

SPRAY TYPE:



**Snowflake**

\*consult the Spray Manual for a more detailed tutorial on the bonding process.

\*\*depending on environment & ambient temperature

## CHEMICAL TECHNICAL DATA

Colour	Clear
System Flammability	Non-Flam Water Based Adhesive
Flash-off Time	3-4 mins depending on atmospheric conditions
Open Time	n/a
SHELF LIFE	6 months from date of manufacture

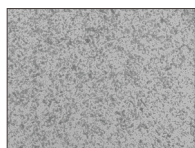
## CANISTER STORAGE/CHANGE OVER

Turn valve on canister into the off position, spray out remaining adhesive left in the hose, disconnect the spray hose and gun from the canister. Reconnect the spray hose to a canister of cleaning solvent (sold separately) and spray out until liquid is clear which indicates that the hose and gun is clean. If you choose to leave the hose and spray gun on the canister, leave the valve on the canister open. Do not disconnect the hose/gun from the canister. Close and lock the spray gun.

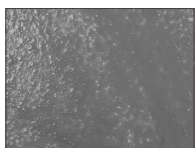
## HANDLING & STORAGE

- Consult Material Safety Data Sheet prior to use.
- DO NOT store at temperatures over 50°C.
- Avoid exposure to direct sunlight.
- DO NOT store directly on concrete floor.
- For optimum performance, store at 18°C during use, but must always be above 10°C.
- When connected, keep valve open and hose pressurised at all times.
- DO NOT close valve until ready to connect to new cylinder.
- Release pressure in hose before disconnection.
- Always test product to determine suitability for your particular application prior to use in production.

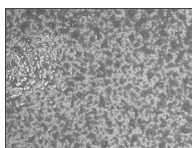
## COVERAGE



COVERAGE TOO LIGHT



COVERAGE TOO HEAVY



CORRECT APPLICATION = 20 dry gms/sqm

## DIRECTIONS FOR USE

- This product is designed to be applied to one side of the surfaces to be bonded together, However, It can be used for double sided bonding where required. Make sure that surfaces are clean, dry and free from dirt, dust, oil, loose paint, wax or grease, etc. For best results, the temperature of the adhesive and the surfaces being bonded should be between 60°F - 80°F (16°C - 27°C).
- Use with adequate ventilation. When possible we recommend shaking the canister well before using. Attach and secure hose tightly onto the spray gun with required tip. Attach the other end of the hose onto the canister. Make sure the hose-valve connections are securely tight. Open the valve on the canister slowly and fully, check for leaks during this process. Unlock the trigger on the spray gun to start spraying.
- Prior to use, check compatibility by spraying a small test patch of the adhesive on the substrate. This product may degrade some substrates.



1. Make sure that surfaces are clean, dry and free from dirt, dust, oil, loose paint, wax or grease, etc.



2. Spray about 8" - 18" away at a 45 degree angle to the surface, applying a uniform, even coat of adhesive to obtain 60% to 80% coverage of the surface. If necessary, spray another coat of adhesive in areas that appear to need more adhesive.



3. Allow flash off time for the adhesive to tack off. For flash off time and applications please refer to product TDS.



4. Adhere surfaces and press together with adequate pressure. A roller is recommended to apply a uniform pressure to achieve maximum strength. Allow 24 hours for the adhesive to fully cure.

5. If the spray tip clogs, unscrew the spray tip from the gun and clean with warm water. Do not use a pin on the spray tip.