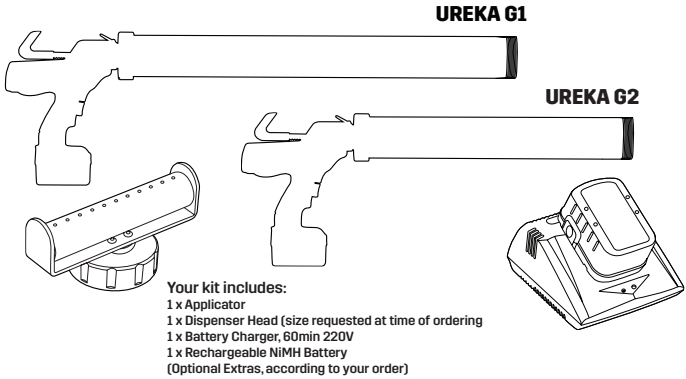
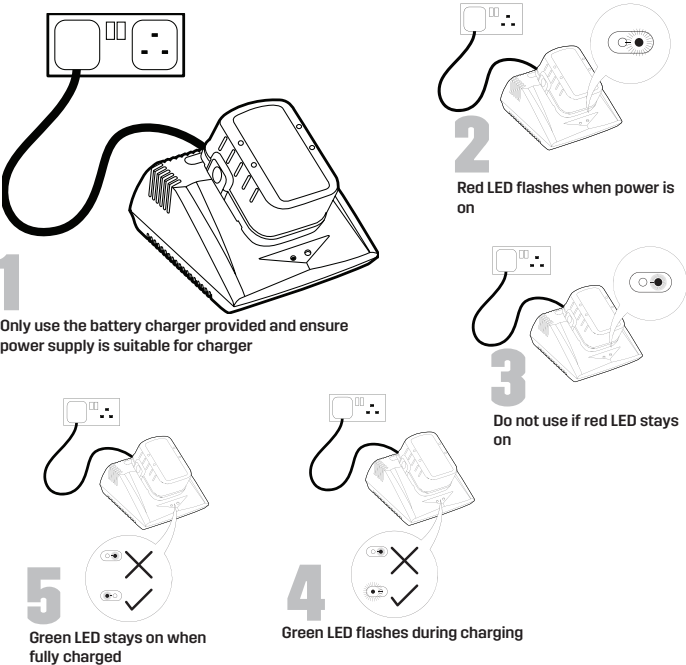


Before you use your UREKA



Charging/recharging your battery pack



WARRANTY

This product has a warranty of 12 months from the date of purchase against any defect in materials or workmanship appearing under normal conditions of use. This does not include problems with the product arising from any other circumstances, including (without limitation):

- Abuse, mishandling, accident or failure to follow operating instructions
- Leaking batteries, exposure to liquid, or infiltration of foreign particles
- Servicing or modification of the product by someone other than Gekko Industries LTD or their authorised service agents
- The use with the product of unauthorised attachments or unsuitable materials

Proof of purchase and product serial number must be presented to claim under warranty. Contact Gekko Industries Ltd using the contact details in this manual.

GENERAL TOOL SAFETY

Failure to follow all instructions listed below may result in electric shock, fire and/or serious personal injury. Read before operating equipment and keep these instructions to hand.

Work area

Keep your work area clean and well lit. Dark or cluttered areas invite accidents. Do not operate power tools in explosive atmospheres, such as in the presence of flammable liquids, gases, or dust. Power tools create sparks which may ignite the dust or fumes. Keep children, bystanders and visitors away while operating a power tool. Distractions can cause you to lose control.

Electrical safety

DO NOT expose power tools to rain or wet conditions. Water entering a power tool will increase the risk of electric shock.

Personal safety

Stay alert, watch what you are doing, and use common sense when operating a power tool. Do not use a power tool while tired or under the influence of drugs, alcohol, or medication. A moment of inattention while operating power tools may result in serious personal injury. Use safety equipment. Always wear eye protection. Dust mask, non-skid safety shoes, hard hat, or hearing protection must be used for appropriate conditions. Avoid accidental starting. Be sure the switch is in the locked or OFF position before inserting the battery pack. Carrying tools with your finger on the switch or inserting the battery pack into a tool with the switch on invites accidents. Do not overreach. Keep proper footing and balance at all times. Proper footing and balance enable better control of the tool in unexpected situations. Dress properly. Do not wear loose clothing or jewellery. contain long hair. Keep your hair, clothing, and gloves away from moving parts. Loose clothes, jewellery, or long hair can be caught in moving parts. If devices are provided for the connection of dust extraction and collection facilities, ensure these are connected and used properly. Use of these devices can reduce dust related hazards.

Power tools

Use the power tool, accessories and tool bits, etc., in accordance with these instructions and in the manner intended for the particular type of power tool, taking into account the working conditions and the work to be performed. Use of the power tool for operations different from those intended could result in a hazardous situation.

Power tool use and care

Do not force the power tool. Use the correct power tool for your application. Do not use the power tool if the switch does not turn it on and off. Any power tool that cannot be controlled with the switch is dangerous and needs repair. Disconnect the battery pack from the power tool before making any adjustments, changing accessories or storing the tool. Such safety measures reduce the risk of starting the tool by accident. Store idle power tools out of the reach of children. Do not allow persons unfamiliar with power tools or a tool's instructions to operate power tools. Power tools are dangerous in the hands of those unfamiliar with them. Maintain power tools. Check for misalignment or binding of moving parts, breakage of parts and any other condition that may affect the operation of the power tool. If damaged, have the power tool repaired before use. Many accidents are caused by poor maintenance of power tools.

Battery tool use and care

Make sure the switch is in the OFF position before inserting the battery pack. Inserting the battery pack into power tools that have the switch on invites accidents. Recharge the power tools only with the charger specified by the manufacturer. A charger that is suitable for one type of battery pack may create a risk of fire when used with another battery pack. Use power tools only with specifically designated battery packs. A risk of injury and fire may result from the use of any other battery packs. Keep battery packs that are not in use away from other metal objects like paper clips, coins, keys, nails or other small metal objects that can make a connection from one terminal to another. Burns or fire may result from shorting the battery terminals together.

Avoid contact with any liquid that may be ejected from the battery under abusive conditions. If accidental contact occurs, flush with water. If liquid contacts eyes, also seek medical help. Irritation or burns may result from liquid ejected from the battery.

Servicing

Have your power tools serviced only by qualified repair persons. Only use identical replacement parts. This will ensure the safety of the power tool is maintained

SAFETY RULES FOR ADHESIVE TOOLS

Always wear safety glasses.

Keep hands out of the plunger and plunger rod area of the adhesive tool to avoid injury.

Always work in areas that are properly ventilated. If necessary, wear appropriate respiratory protection. Fumes from some caulk and adhesives can be noxious.

Turn power unit off and disconnect battery pack before installing and removing accessories, before adjusting or when making repairs. an accidental startup can cause injury.

Use only accessories that are recommended by the manufacturer. the use of improper accessories may cause injury.

Avoid inadvertent release of material by locking trigger in the OFF position when not in use.

Take care not to get caulk or adhesive on battery contact points.

Always read and follow all manufacturer's instructions regarding caulk or adhesive. Failure to do so may result in personal injury.

When not in use, place tool on its side on a stable surface where it will not cause a tripping or falling hazard. Some tools with large battery packs will stand upright on the battery pack but may be easily knocked over.

G1 & G2 ADHESIVE APPLICATOR OPERATION MANUAL

UREKA
THE NAME THAT STICKS

T: +44 (0) 117 971 1364
thenamesthatsticks.com

UREKA Global Ltd.
7 Flowers Hill, Bristol, BS4 5JJ

